

This document will instruct you in installing CodeWeavers CrossOver for Mac OS X. CrossOver is a Microsoft Windows emulator that will allow you to run Windows applications like Internet Explorer, which is required to access Halo Enterprise Manager.

To Install CrossOver

1. Download a copy of **CodeWeavers CrossOver** from the following link:
<http://www.codeweavers.com/products/cxmac/>
2. Close all windows and applications before installing CrossOver.
3. Drag the **CrossOver installation file** into your **Applications** folder and then double-click the **CrossOver** icon.

The **CrossOver Software Installer** appears.

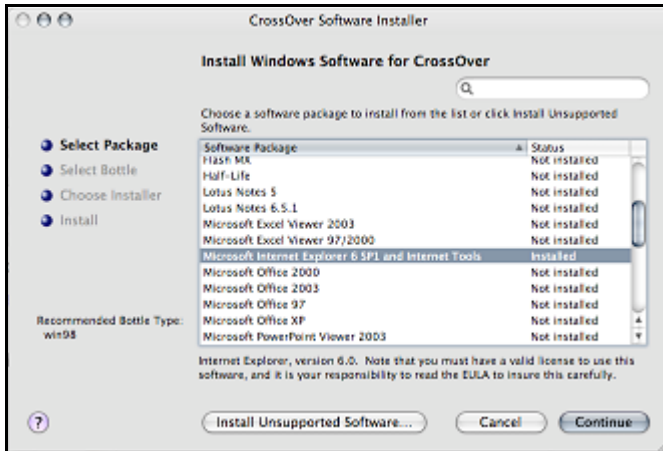
4. If prompted, insert **Disk 1** of your **Mac OS X** installation CD. This step is **optional**, but will give CrossOver a standard Macintosh look and feel.

After loading, the **Welcome** screen appears. This may take several minutes.



5. Click the **CrossOver Software Installer** link.

The **Install Windows Software** screen appears. This screen displays a list of all Windows applications you can install on your Mac OS using CrossOver.



6. Find and select the **Microsoft Internet Explorer 6 SP1 and Internet Tools** package and then click **Continue**.
7. Follow the prompts to install CrossOver. This should take approximately 5 minutes. When complete, CrossOver begins to install Internet Explorer 6.
8. Follow the prompts to install Internet Explorer. Select the **default** installation.
Note: If something seems to be taking an unusually long time to install, try moving the installation Window aside to check for any hidden message prompts.
9. When installation is complete, CrossOver prompts you to reboot. This will only reboot **CrossOver**, not your actual computer or your Mac OS X.

When rebooting is complete, you will now have an **Internet Explorer** icon in the following folder, where *[PersonalFolder]* is the name of your personal folder:

/Macintosh HD/Users/[PersonalFolder]/Applications/CrossOver

10. Double-click this icon to start CrossOver and load Internet Explorer 6.

It may take a minute for CrossOver to start up.

CrossOver is now installed ready for use! When using Internet Explorer in CrossOver, keep in mind that you may sometimes need to click a link twice in order to load a page. Enterprise Manager will tell you that a 'report is loading' to inform you when a link is correctly loading.